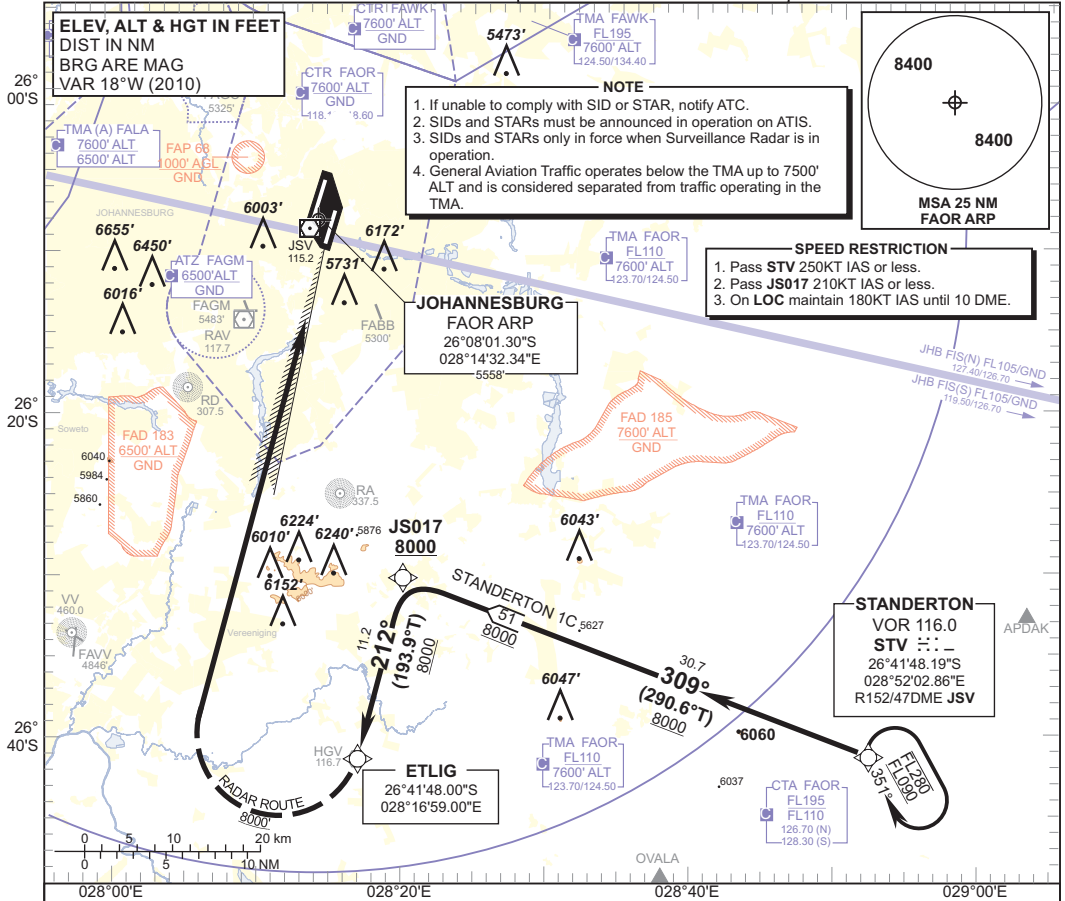


**STANDARD ARRIVAL
CHART -
INSTRUMENT
(STAR)**

TRANSITION ALTITUDE
8000'
TRANSITION LEVEL
ATC

RADAR APP S 124.50 TWR E 118.60
E 124.50 W 118.10
W 123.70 ATIS 126.20
DIR 121.40 115.20
ACC N 126.70 SMC 121.90

**JOHANNESBURG
(O.R. TAMBO INTERNATIONAL)
RNAV (GNSS) RWY 03R
STANDERTON 1C**



NOTE

1. If unable to comply with SID or STAR, notify ATC.
2. SIDs and STARs must be announced in operation on ATIS.
3. SIDs and STARs only in force when Surveillance Radar is in operation.
4. General Aviation Traffic operates below the TMA up to 7500' ALT and is considered separated from traffic operating in the TMA.

SPEED RESTRICTION

1. Pass **STV** 250KT IAS or less.
2. Pass **JS017** 210KT IAS or less.
3. On **LOC** maintain 180KT IAS until 10 DME.

STANDERTON
VOR 116.0
STV :: -
26°41'48.19"S
028°52'02.86"E
R152/47DME JSV

STANDERTON 1C RWY 03R Leave STV for JS017. At JS017 turn left proceeding to ETLIG for radar vectoring onto ILS LOC RWY 03R.

COMMUNICATION FAILURE PROCEDURE (Squawk 7600)

- Before STV:** Proceed to STV and enter the STANDERTON RNAV (GNSS) hold. Hold at last assigned level for minimum 5 MIN then descend to FL130 in the hold or maintain last assigned level if below FL130. Leave STV on the "After STV" Communication Failure Procedure.
- After STV:** Continue on the STANDERTON 1C RNAV (GNSS) STAR to JS017 and descend to FL130. Passing JS017 descend to 8000'ALT, at ETLIG continue on the RNAV (GNSS) STAR RWY 03R to JS2F1. Intercept the ILS LOC RWY 03R and land RWY 03R.
- Note:** Aircraft entering the TMA at FL110 and below are to enter the STANDERTON RNAV (GNSS) hold. Hold at last assigned level and continue on the routing for the STANDERTON 1C STAR.
- Caution:** Holding patterns below FL110 will be conducted partially outside controlled airspace.

In the event of a missed approach with the intention of diverting to an alternate aerodrome, proceed as follows:

- To the North and North-West: Follow the routing for the VASUR 3A SID.
- To the East and North-East: Follow the routing for the EGMEN 2A SID (Jet ACFT) or EXOBI 1A SID (Turboprop ACFT).
- To the South-East: Follow the routing for the APDAK 3A SID.
- To the West and South-West: Follow the routing for the RAGUL 3A SID.

CHANGE: SPEED RESTRICTION BLOCK